

a story of the beginning of EVERYTHING

the history of

GOD

***Highlights  
from  
'The History of God'***

**Awakening  
Channelled Communications  
and  
Spiritual Physics**

G U Y N E E D L E R





# Contents

- An awakening.
- A journey amongst the frequencies (meeting my first energetic entities).
- Byron, Hum, Aliens and the OM.
- A short history of the Origin & the Source Entity.
- Spiritual Physics & the Source Entities Multiverse (the 12 dimensions).
- An illustration of how the dimensions are overlaid.
- Ascension through the frequencies.
- A Loss of communication in lower frequencies.
- Time.
- Why we are here, the importance of the Earth & the creation of Mankind.
- The spiritual functions of RNA DNA.
- The “three in one” aspect of Mankind.
- Karma – An energetic issue.
- The bigger picture.

This is a brief overview there are lots of other subjects in the book!



# An Awakening



# An Awakening

- Life long interest in the metaphysical – UFO's etc.
  - Read many metaphysical books of the day.
- Meditated extensively during teen's.
- Told in a waking dream that what I believed was true but to focus on earthly work first (3 men in white robes).
- Introduced to Reiki by a friend.
- Received Brennan Healing Science training from my healer - a direct student of Barbara Brennan.
  - Including channelling and past life healing.





# An Awakening

## The Swedish Attunement

I received the start of an awakening cascade via Aliens and a spiritual friend in Sweden.





# **A Journey Amongst The Frequencies**



# A Journey Amongst The Frequencies

(meeting my first energetic entities)

- Learnt to traverse the lower levels through energy healing courses.
- Reprimanded when my teacher noted I was able to go higher than the 7 Auric levels for not being grounded.
  - Discovered 10 levels are associated with the human form.
  - 1-3 physical, 4-7 spirituophysical, 8-10 spiritual.
  - 14 are associated with the physical environment. 11-14 include things like radio/microwaves etc.
- Discovered methods of shield/filters could be created by using the levels and knitting them together.
- Discovered other entities existed above level 14.



# Byron, Aliens Hum and the OM



# Byron, Aliens Hum and the OM



- The first entities contacted were
  - Byron.
  - Aliens in a base on Crete.
  - The OM.
- The Source Entity and the Origin required me to traverse the higher levels.
  - above level 100.

The communications with these entities is where the information for *The History Of God* originated.

# Byron, Aliens Hum and the OM



## Byron

- An energetic entity who exists on the 27<sup>th</sup> level.
- He (it?) exists on a planet, in a galaxy, in a different universe to humankind.
- He experiences a different kind of physicality to us (relative to his dimensionality).
- Bodily form is relative to the work being done.
- Byron's race are a collective working for the evolution of the "Whole" and the planet they exist on.

# Byron, Aliens Hum and the OM



## The Base in Crete

The Aliens use a base on Crete to study human kind working with nature.





# Byron, Aliens Hum and the OM



## Aliens

- Travel between the stars and galaxies is by using frequency level translation and then mental “intention”.
- Translation capability due to the frequency/dimensional overlap and concurrent universal existence (inter-dimensional jumps).
- They use energetic vehicles to protect them from the loss of function that excursions into the lower frequencies result in.



# Byron, Aliens Hum and the OM



## Hum & the OM

- Hum is beloved of the OM.
- Sent to assist me in my early dialogues.
- The Om exist in the heaven levels (high) close to the Source Entity.
- They are a very old pure energy race of light beings. (incarnation is not required for OM).
- The OM are here to help the Earth ascend and helped with the formation of the civilisation of Atlantis.

# Summary 1



- Many spiritual experiences in mid teens – awakening delayed (not the right time for me).
- Study of energy healing (Reiki, Brennan Healing Science) triggered awakening process in early 40's.
- Extraterrestrial Entities help to open my spiritual vision and ability to traverse the frequencies and communicate with Byron, Aliens, Hum & the OM.
- I swiftly progressed to communicating in the very high frequencies which results in contact with The Origin and The Source Entity.

This lecture describes the information they gave to me.



# **A Short History of the Origin and the Source Entity**

# A Short History of the Origin



- The Origin is the ABSOLUTE, the ALL.
- It is sentient energy, frequency and dimension.
  - 12 zones, 12 dimensions, 12 frequencies.
- Each dimension is a “tritave” of 3 “dimensional components”.
  - (e.g. height, width, length in the physical universe).
- Initial self investigation resulted in experience, knowledge and evolution.
- The Origin desired acceleration of evolution and created 12 Origins equal to itself, external to itself - This failed!
- The Origin created 12 Source Entities in equality but lesser than itself and internal to itself.



# A Short History of the Source Entity (God?)



- Created by the Origin.
- A singular energy source – left to its own devices.
- Once self aware it was given the task of experiencing and evolving in any way possible and passing this on to the Origin.
- As a response to this task it created our multiverse.
- Populated it with smaller versions of itself.



# **Spiritual Physics and the Source Entities Multiverse (The 12 Dimensions)**

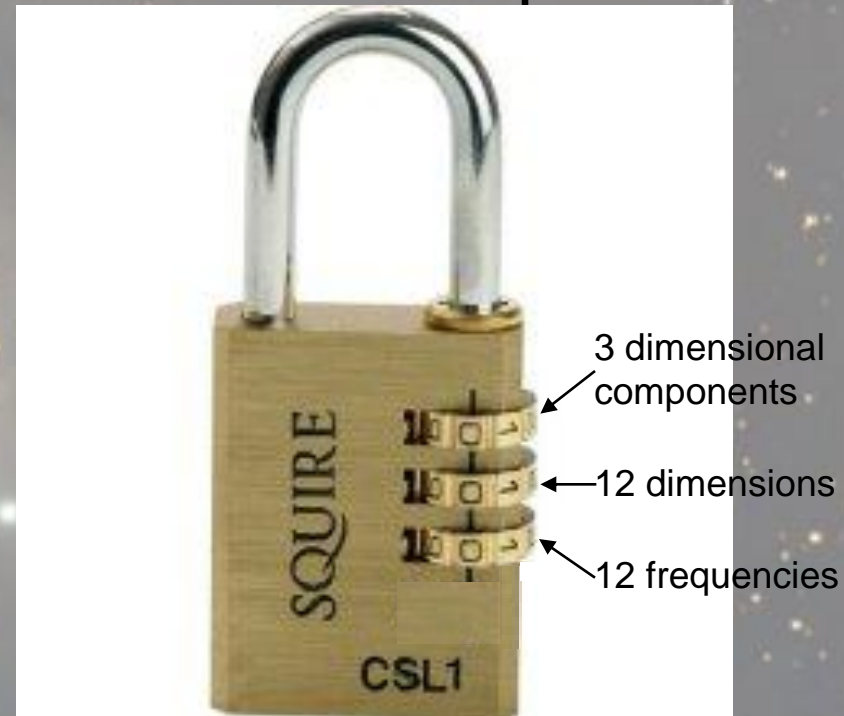
# Spiritual Physics and the Source Entities Multiverse



**Our multiverse has 12 dimensions with 12 frequencies with 3 tritaves**

- Each dimension, frequency and tritave component can be counted as an individual permutation of “space” (each an individual universe).

Consider the barrels and numbers on a combination padlock



# Spiritual Physics and the Source Entities Multiverse



## The dimensional groups.

- 1,2,3 are linked.
- 4,5,6 are linked.
- 7,8,9 are linked.
- 10,11,12 are linked.
- A 7<sup>th</sup> dimensional entity can traverse the 7<sup>th</sup> and 8<sup>th</sup>. The 9<sup>th</sup> is too far and is a function of evolution.
- A 7<sup>th</sup> dimension entity can only traverse to the 6<sup>th</sup> via an energetic construct.
- A 8<sup>th</sup> dimensional entity can traverse the 7<sup>th</sup> and 9<sup>th</sup>.
- Traversing from the 9<sup>th</sup> to the 10<sup>th</sup> dimension is a function of evolution.





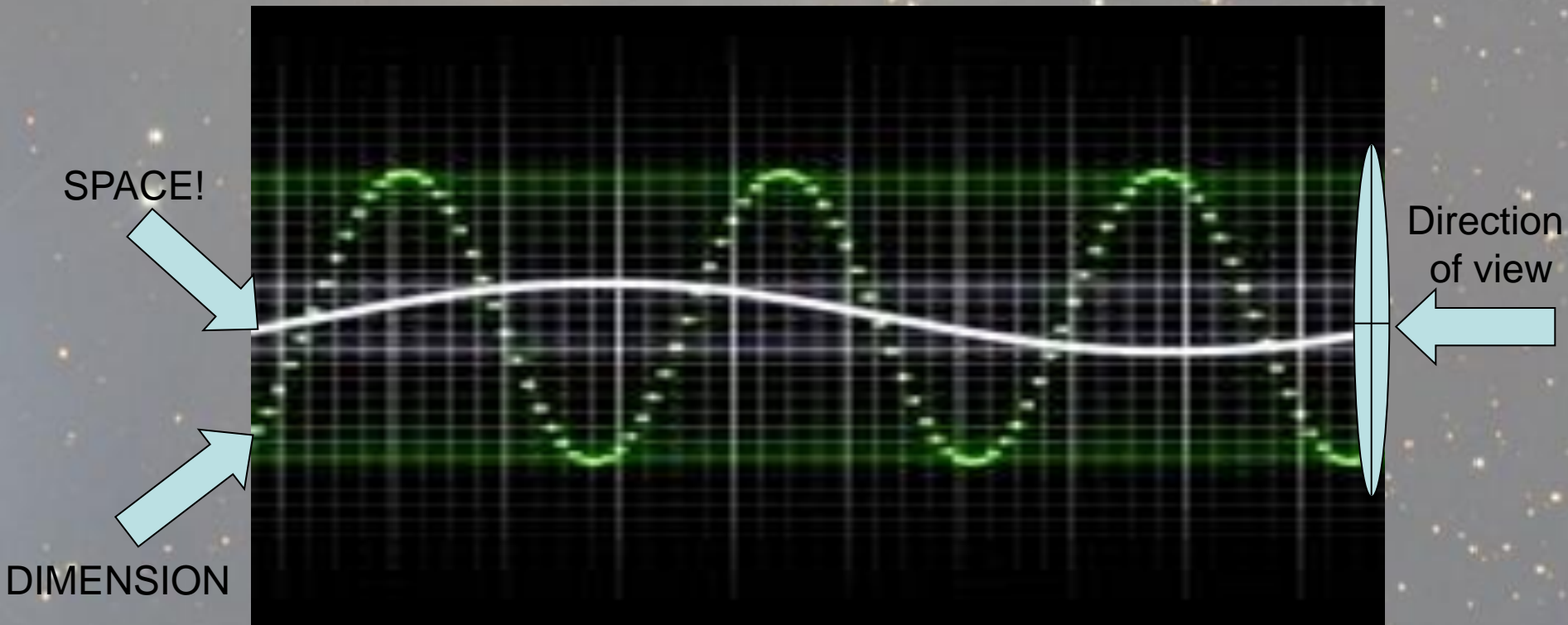
# **An Illustration of How The Dimensions Are Overlaid**

# Spiritual Physics and the Source Entities Multiverse



## An Illustration of How The Dimensions are Overlaid

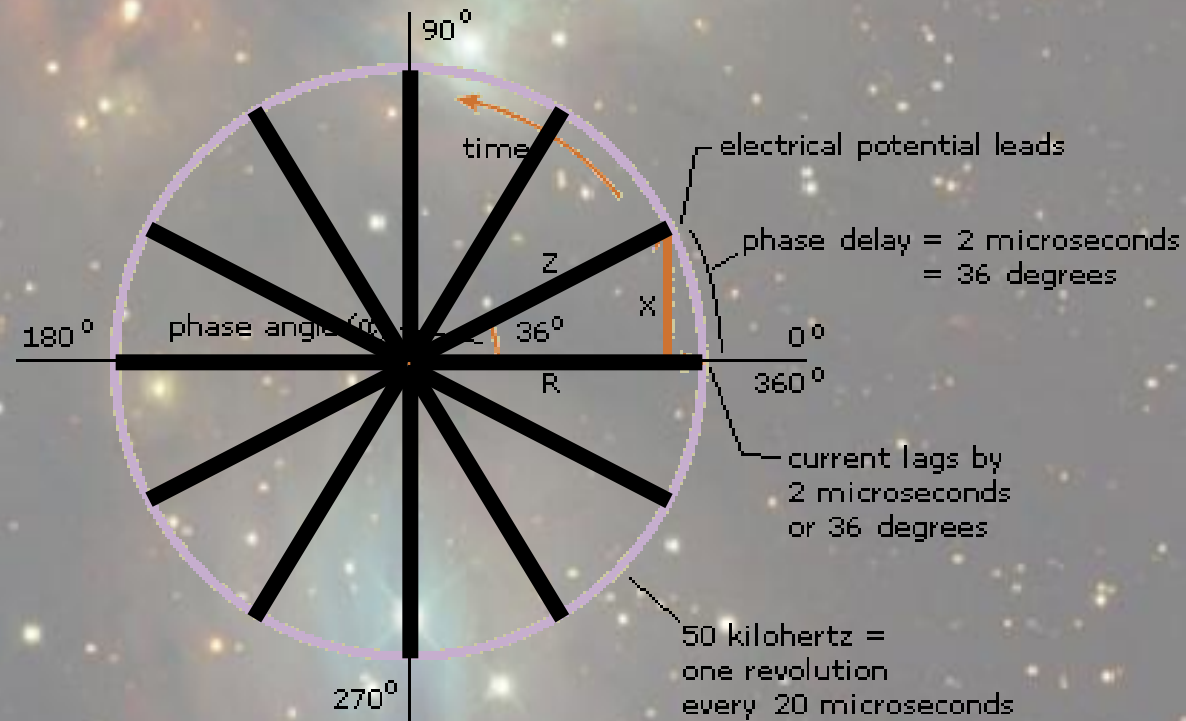
**Phase Angle** – *The difference between the phase of a sinusoidally varying quantity and the phase of a second quantity which varies sinusoidally at the same frequency.*





# Spiritual Physics and the Source Entities Multiverse

## An Illustration of How The Dimensions are Overlaid



### Potential Leads Current

phase delay = 2 microseconds

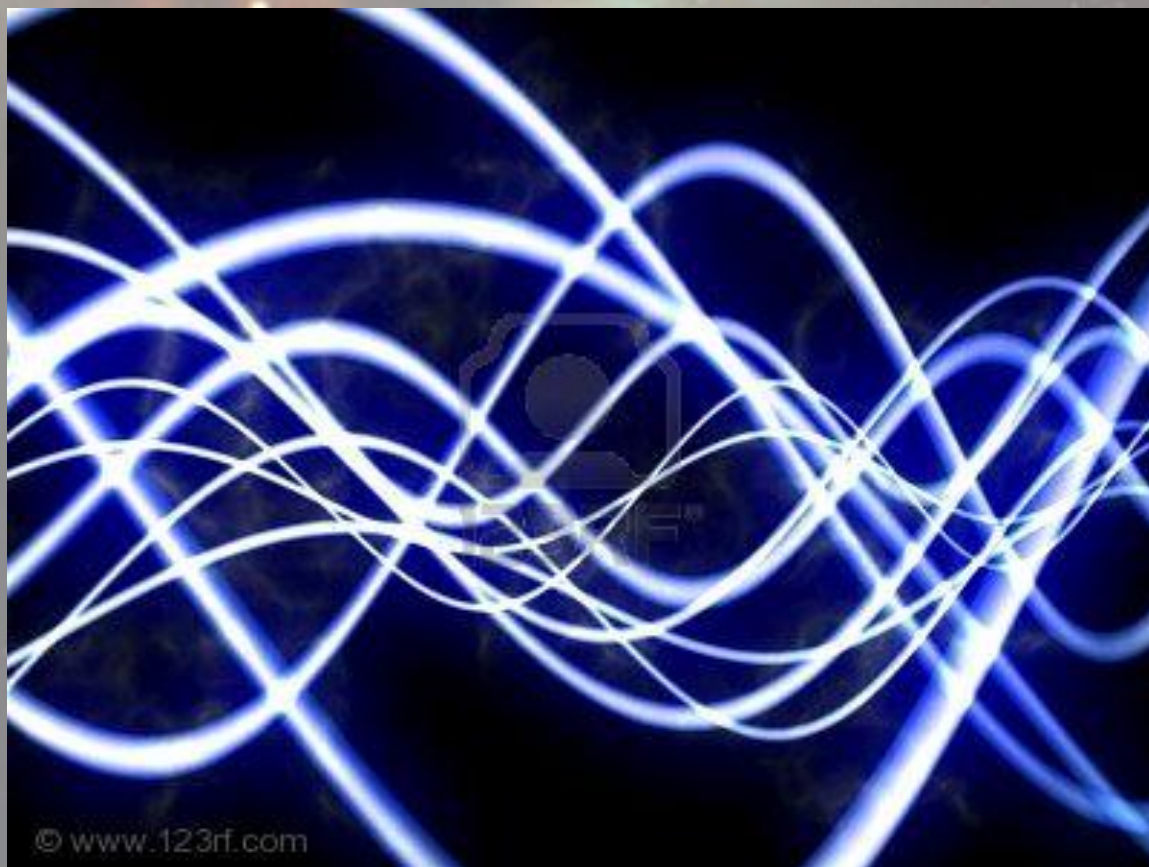
phase angle = 36 degrees

$X/R = 0.727 = \tan(36^\circ)$



# Spiritual Physics and the Source Entities Multiverse

An Illustration of How The Dimensions are Overlaid







# Summary 2

- The Origin (The Absolute) created 12 Source Entities to assist its evolution.
- The creator of our universe (Source Entity 1) created a multiverse.
- Our multiverse has 12 full dimensions.
- The three dimensional components of the first full dimension create the physical universe - the remainder are higher energy.
- The dimensions are inflated with frequency bands.
- The full dimensions are grouped in threes.
- The full dimensions in each group are linked.
- Linking allows entities within the group to traverse the other group dimensions.



# Ascension Through the Frequencies

# Ascension Through the Frequencies

*“Before an entity can translate to the next dimension it must be able to ascend the frequencies that fill the dimension of domicile”*

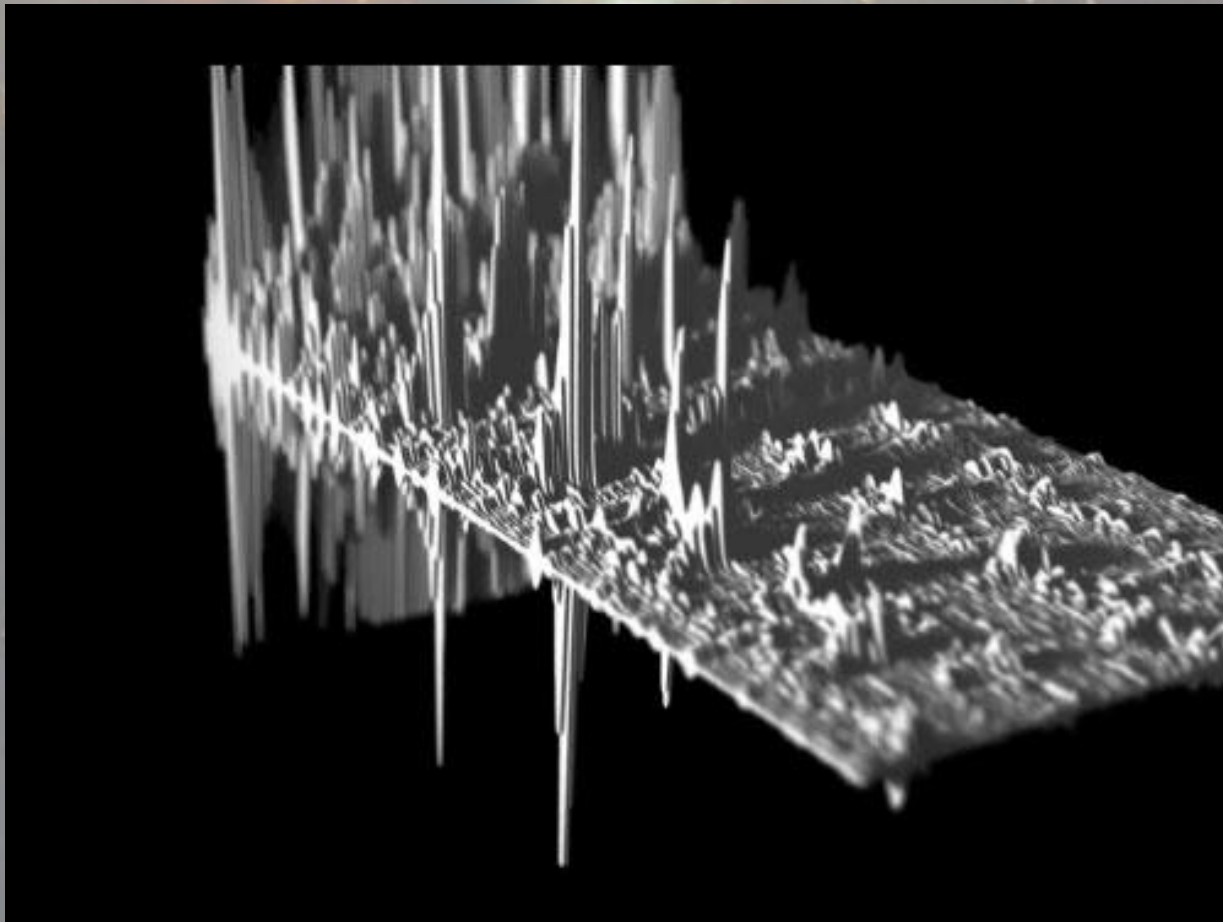




# Ascension Through the Frequencies



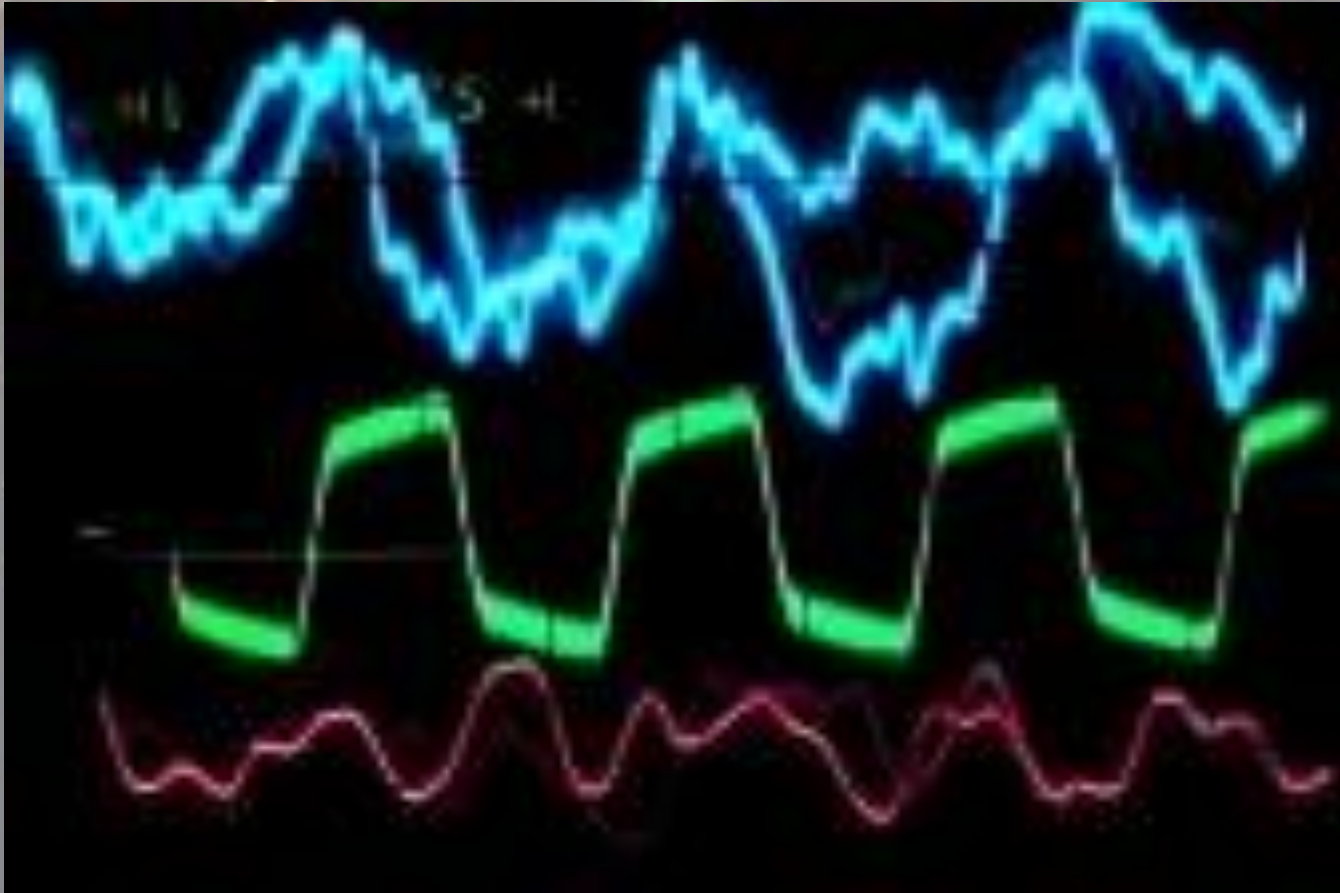
Three Dimensional Frequency Space



# Ascension Through the Frequencies



An Illustration of Ascension Opportunities



Loss of communication through reduction in frequency



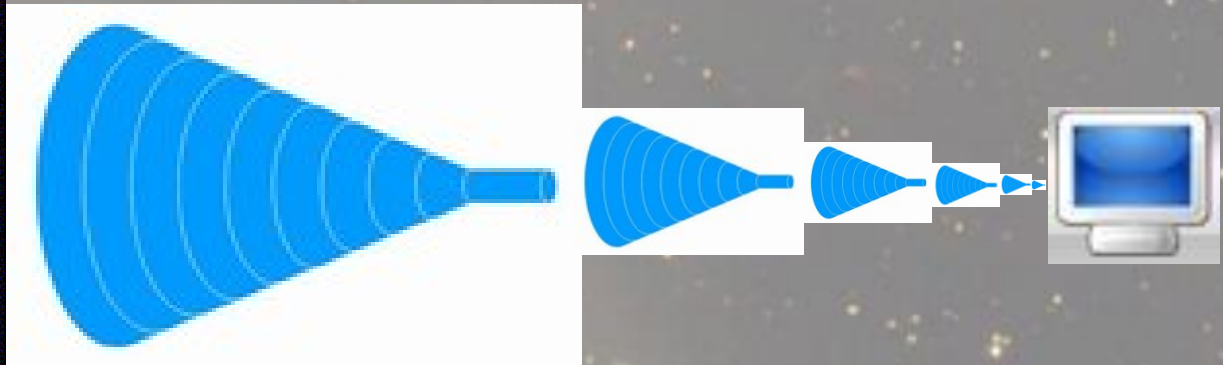
# **A Loss of Communication & Faculties In Lower Frequencies**



# The broadband illustration of loss of communication with our higher selves & faculties due to traversing the lower frequencies



World Wide Web  
= Our True Energetic Self  
5,000,000 senses



Our Incarnate Self  
5 senses



**Time**

# Spiritual Physics and the Source Entities Multiverse



## TIME

- Doesn't exist.
- Time is better described as “Spherical or Holographic Event Space”.
- Because events occur in a holographic way, a particular event and all its possible alternatives exist simultaneously, they are “in contact” with each other, they are “separately” together.
- They can therefore be traversed to experience each events' alternatives.



# Spiritual Physics and the Source Entities Multiverse

A rubber band ball is a good illustration of  
“Event Space”





# Summary 3

- An entity has to ascend the frequencies in its dimension of domicile before it can translate to the next dimension.
- Our physical existence in the lower frequencies results in a major loss of communication with our higher energetic component.
- Time does not occur linearly as perceived on the physical earth.
- Events occur holographically allowing all possible alternatives to exist.
- It is possible to experience (perceive) Past, Present and Future events simultaneously.



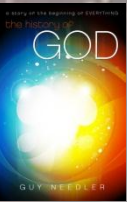
# **The Basics of Why We Are Here**



# The basics of Why We Are Here



- To help the Source Entity Evolve.
- Therefore to help the Origin Evolve.
- To Experience.
- To Learn.
- To Evolve.
- To achieve Self Realization whilst in the physical.
- To Facilitate the Ascension of this Universe.
  - via the Earths Ascension.
- Become equals with the Source Entities and the Origin. (information from SE5).
- To ascend together with the Source Entities and the Origin.



# The Importance of the Earth

# The Importance of the Earth



- The Earth is an experiment in free will, designed to help accelerate evolution and create ascension.
- Universally, the Earth can be considered as a piece of important circuitry in a computer.
- Without its circuits being complete (ley-lines) it does not work properly and doesn't allow the rest of the circuit (the ley-lines or wormholes to the other stars and planets) to function.





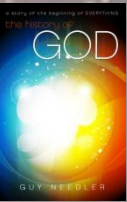
# The Importance of the Earth



- Hence the universe cannot move up the frequency levels until the Earth starts to function properly allowing IT to increase in frequency level.
- If the experiment in free will is successful, and the Earth survives as a result, free will, will be adopted throughout the universe.
- The Earth is therefore pivotal within the universe hence the need to raise it's frequency levels.







# The Creation of Mankind

# The Creation of Mankind



## Why create a physical form

- Experiencing the lower frequencies accelerates evolutionary progression.
- Higher frequency entities cannot FULLY experience lower frequency environments.
- Association with a lower frequency vehicle is therefore required.
- This allows us to work WITH the physical whilst being IN the physical.

# The Creation of Mankind



## The first human form

- Not as dense as the current version.
- Incarnate souls & groups were connected/linked.
- Reproduction achieved by body wide cellular division with every 3<sup>rd</sup> or 4<sup>th</sup> cell going out of phase creating a 2<sup>nd</sup> (or more) fully grown fully functional body.
- It became unusable when we became denser resulting in disharmony and mutation of the master form.
- Energetic dysfunctions, due to mutation, affected the incarnate spirit, including the rest of energetic humanity and their bodies.
- This problem was profound.

# The Creation of Mankind



## The second human form

- Reproduction limited to a 1:1 basis & reduced life.
- Disconnection of the link to incarnate souls/groups.
- But ... Spirits were still able to share or move from one body to another to share experiences.
- Increasing demand to incarnate required a faster reproduction cycle - increasing the errors, affecting the spirit energetically.
- The frequency “stamp” of the 1<sup>st</sup> spirit using the body resulted in an incompatibility with the next user which was compounded as sharing progressed.
- A spirits’ energetic recovery took thousands of solar years.



# The Creation of Mankind



## Changes made to support robust incarnation

- Reduce the number of bodily incarnations to one per spirit.
- Remove the ability to move to other bodies once incarnate.
- Remove the connections between spirits whilst incarnate, including memory of such abilities.
  - they won't miss what they can't remember.
- Reinstate full abilities once incarnation is finished.
- Create a body that was more robust in its reproductive capabilities.
- Protect for the reduction in frequencies being experienced.



# The Creation of Mankind

## The third and current human form

- Initially hermaphroditic reproduction employed.
- Reproduced all the good and bad points of a particular body.
  - Possible destruction of reproduction line due to virus.
- Diversification of the reproduction process into two was therefore required.
- Male/Female bodies were simpler in reproduction function as the “blueprint for creativity” is shared - only one half of the reproductive function is copied.
- Immunity shared therefore more robust.
- Faster gestation in a safe contamination/infection free location resulted in a more robust reproduction cycle.



# Summary 4

- We are here to learn who we really are, help the Earth ascend, ultimately assisting in the Source Entity and thus the Origins evolution.
- Mankind needs to raise the frequencies of the Earth as it is an important part of the universes energy grid.
- To assist, mankind created a physical form to enable it to experience low frequencies and accelerate evolutionary progression.
- The current Human form is the third physical form to be used. It has had 2 reproduction versions.



# **The Spiritual Functions of RNA & DNA**

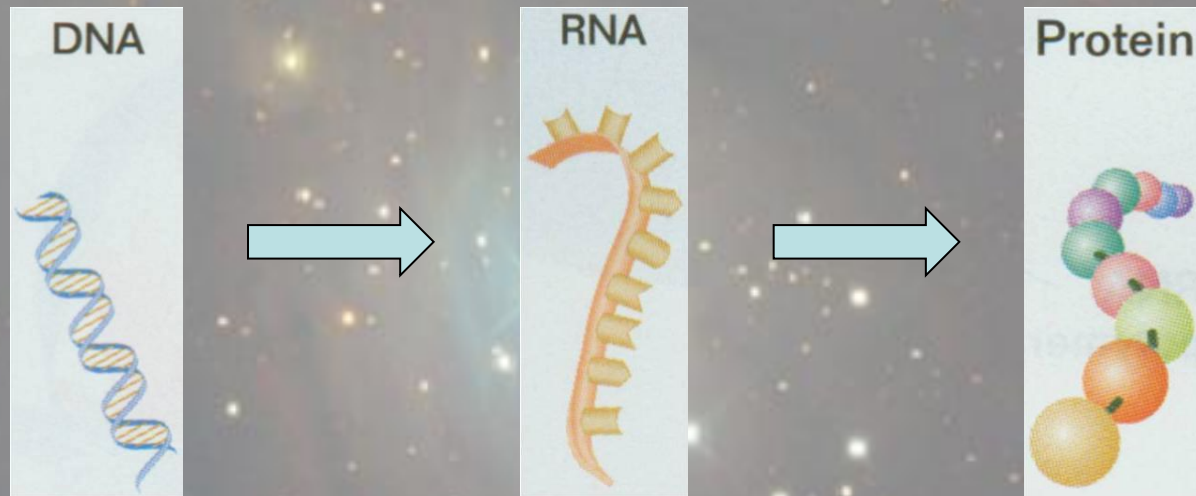


# The Spiritual Functions of RNA & DNA



## The Physical Functions of RNA & DNA

Physically, RNA is the medium that transmits programming from DNA to the proteins which are used in cell function.

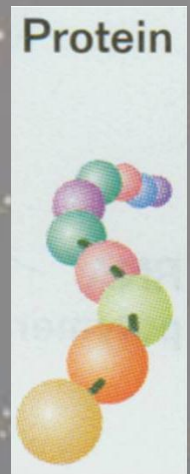
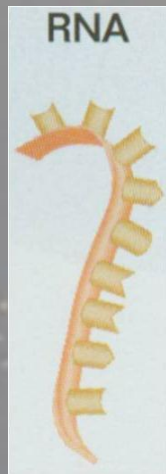


# The Spiritual Functions of RNA & DNA



This is only one way of a multi-way communication system. It does not take into account the first set of information transmitted by the RNA to the DNA, therefore RNA is programmed by the spiritual program (Ethereic Template & Body – Auric levels 1 & 5).

DNA Programming → DNA Replication → RNA Transcription →



RNA  
Processing

mRNA  
Transport →

Protein  
Translation

← RNA Feedback to Etheric Body/Template

← Feedback to RNA

Spiritual information  
From Etheric  
Template/Body →

# The Spiritual Functions of RNA & DNA



- RNA is an interface medium that exists in the higher physical and lower spiritual levels at the same time.
- RNA is a communication medium between cells allowing correct location of cells, and, cellular binding to create the bodily function they were assigned.
- The cell protein must feed back to the RNA that it received the correct information. It is passed on to the Etheric template/body for confirmation.
- The wider roles of RNA are starting to be investigated by science.



# **The Three-in-One Aspect of the Human Body**



# The Three-in-One Aspect of the Human Body



- Physical, Intermediate/Astral (Spirituophysical), and Spiritual.
- This is the “three-in-one” aspect that religions talk about, which is trying to explain something that has been forgotten in the physical.
  - 14 levels associated with the physical.
  - 10 levels are associated with the human form
    - (7 currently recognised).
  - 1-3 physical, 4-7 spirituophysical, 8-10 spiritual.
  - Above the 10<sup>th</sup> is fully energetic.





# **Karma – An Energetic Issue**

An Essential Ingredient for Ascension



# Karma – An Energetic Issue

An Essential Ingredient for Ascension

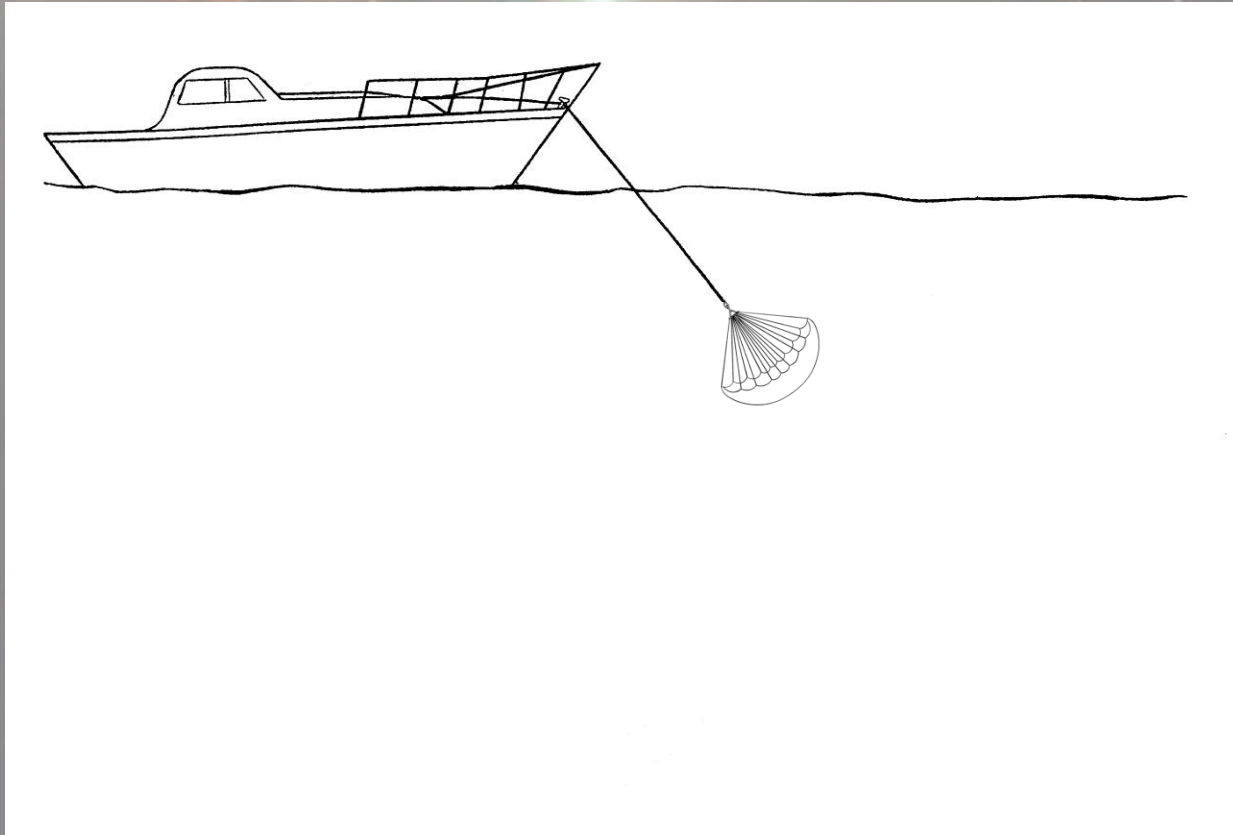
## What is Karma?

- A localised decrease in frequency.
- Slows down evolutionary opportunity.
- Stops ascension to higher frequencies.
- Karma can be generated by poor choice of “deed’s” whilst in the physical or infatuation with lower frequency (physical), sensory stimuli.
- Karma can be good and aid ascension!

# Karma – An Energetic Issue

An Essential Ingredient for Ascension

## The Sea Anchor Illustration

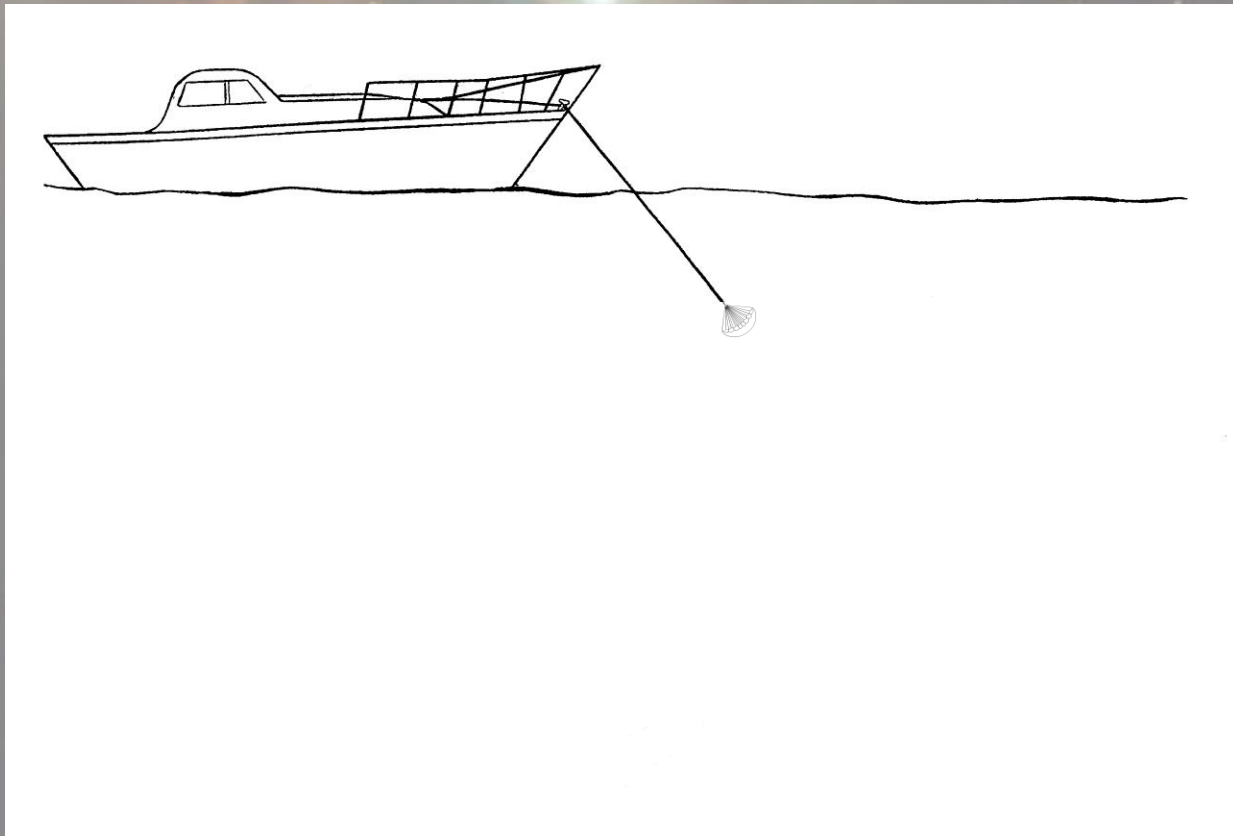




# Karma – An Energetic Issue

An Essential Ingredient for Ascension

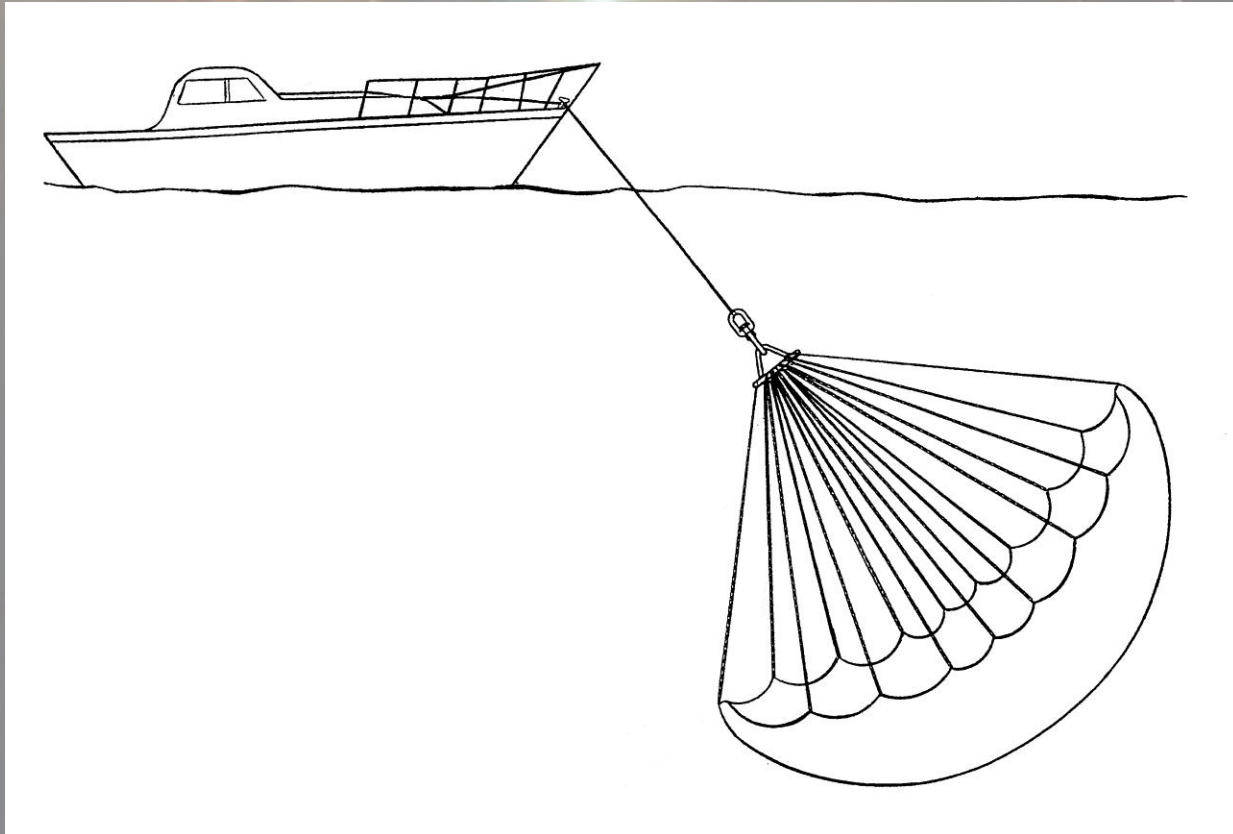
## The Sea Anchor Illustration (Minimal Karma)



# Karma – An Energetic Issue

An Essential Ingredient for Ascension

## The Sea Anchor Illustration (Major Karma)



# Karma – An Energetic Issue

An Essential Ingredient for Ascension



## The effect of Good Karma





# Summary 5

- RNA has additional, important roles, as it passes information from higher spiritual energy, to the lower energy physical body of a cell.
- The human body is associated with different levels of physical, intermediate/astral (spirituophysical) and spiritual energy – “three in one”.
- Karma is a localised loss of frequency around that part of us that is associated with the physical body.
- Karma creates a stronger link to the physical realm.
- Karma can create good learning opportunities, which can increase an entities frequency once recognized and understood.

There is NO right or wrong – just experiences and evolution.





# The Bigger Picture



# The Bigger Picture

A message from the Source Entity.

*“Every one of you has a small part of the **BIGGER** picture”*

We should therefore consider this before thinking  
we know what the picture is.

# The Bigger Picture

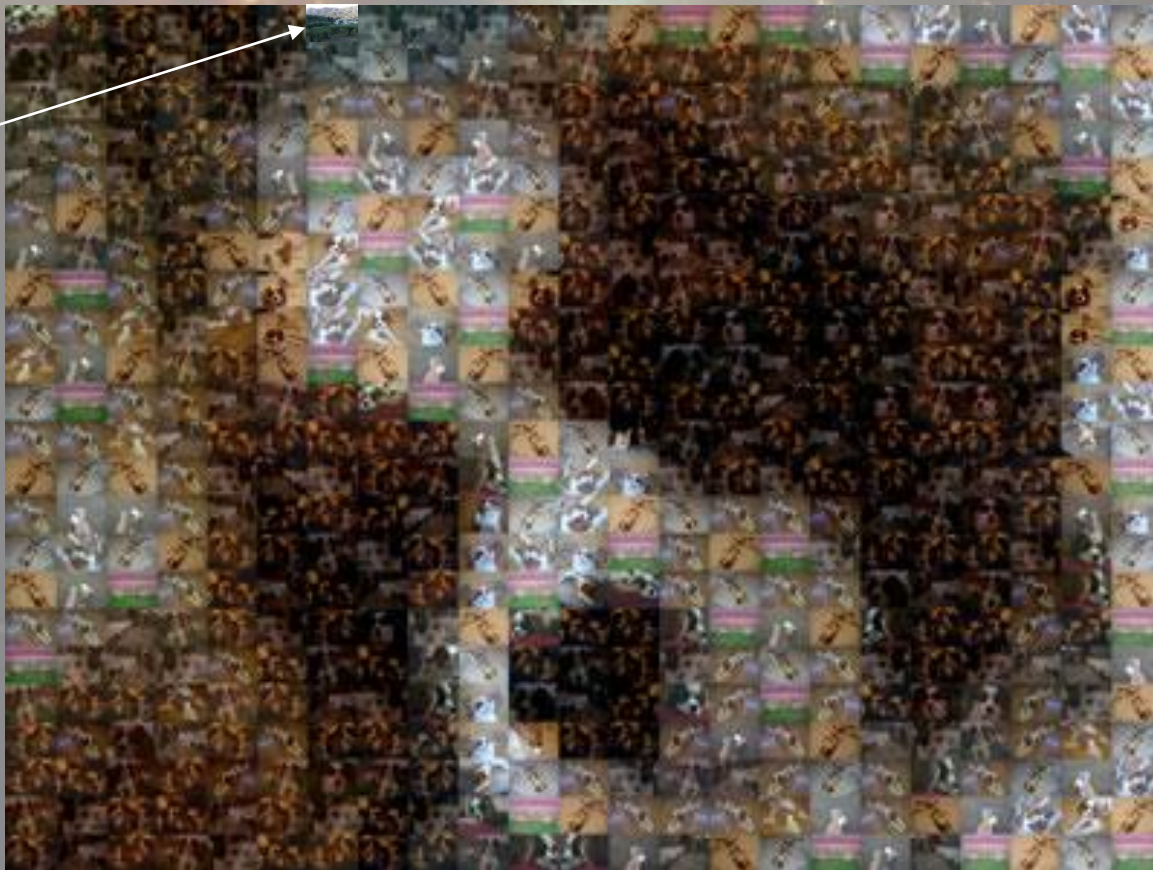
**We all know a very very small part of the Bigger picture.**





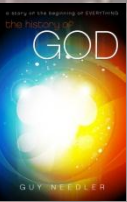
# The Bigger Picture

It is small though.





# The Bigger Picture



Source: Phillip Torrone <http://www.flashenabled.com>

# The Bigger Picture

**Our personal understanding is much smaller than we think.**



# The Bigger Picture



Source: Phillip Torrone <http://www.flashenabled.com>



# The Bigger Picture

.....And it gets smaller.





# The Bigger Picture

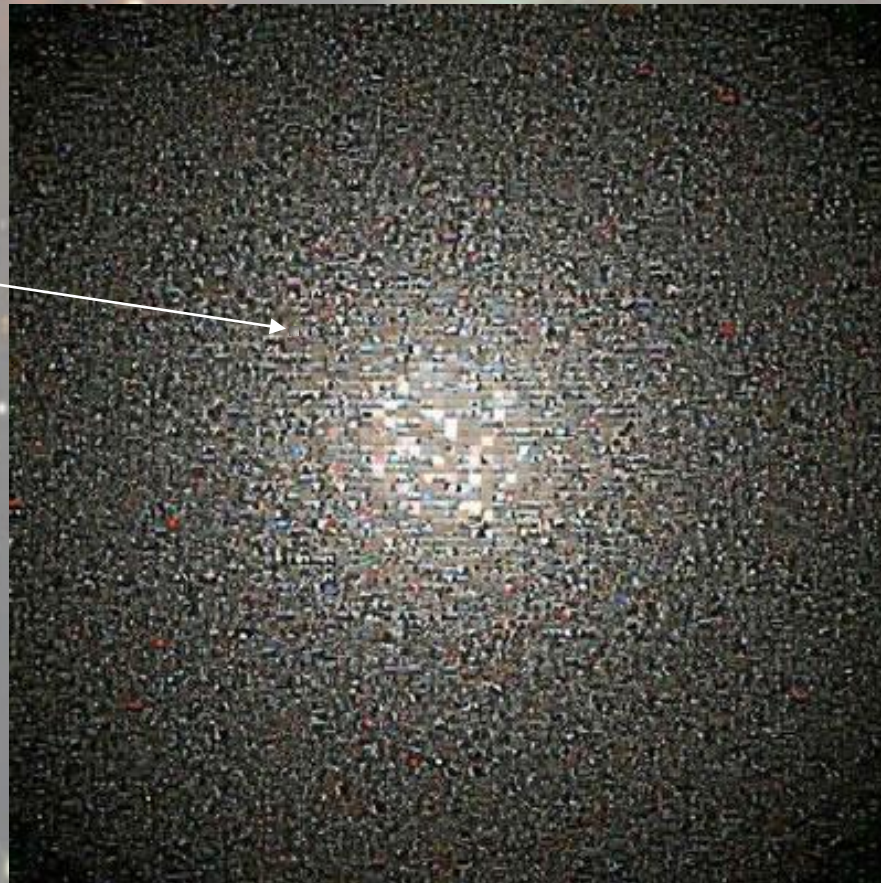


Source: Phillip Torrone <http://www.flashenabled.com>



# The Bigger Picture

**And smaller – until eventually, we see the majesty in the Source  
and ultimately the Origin in “The Bigger Picture”**







# The Bigger Picture

A message from the Source Entity.

***“Dismiss Nothing”***

***“Consider and question everything about your physicality”***

a story of the beginning of EVERYTHING  
the history of

# GOD

**Thank You**

Questions  
And  
Answers

GUY NEEDLER

