

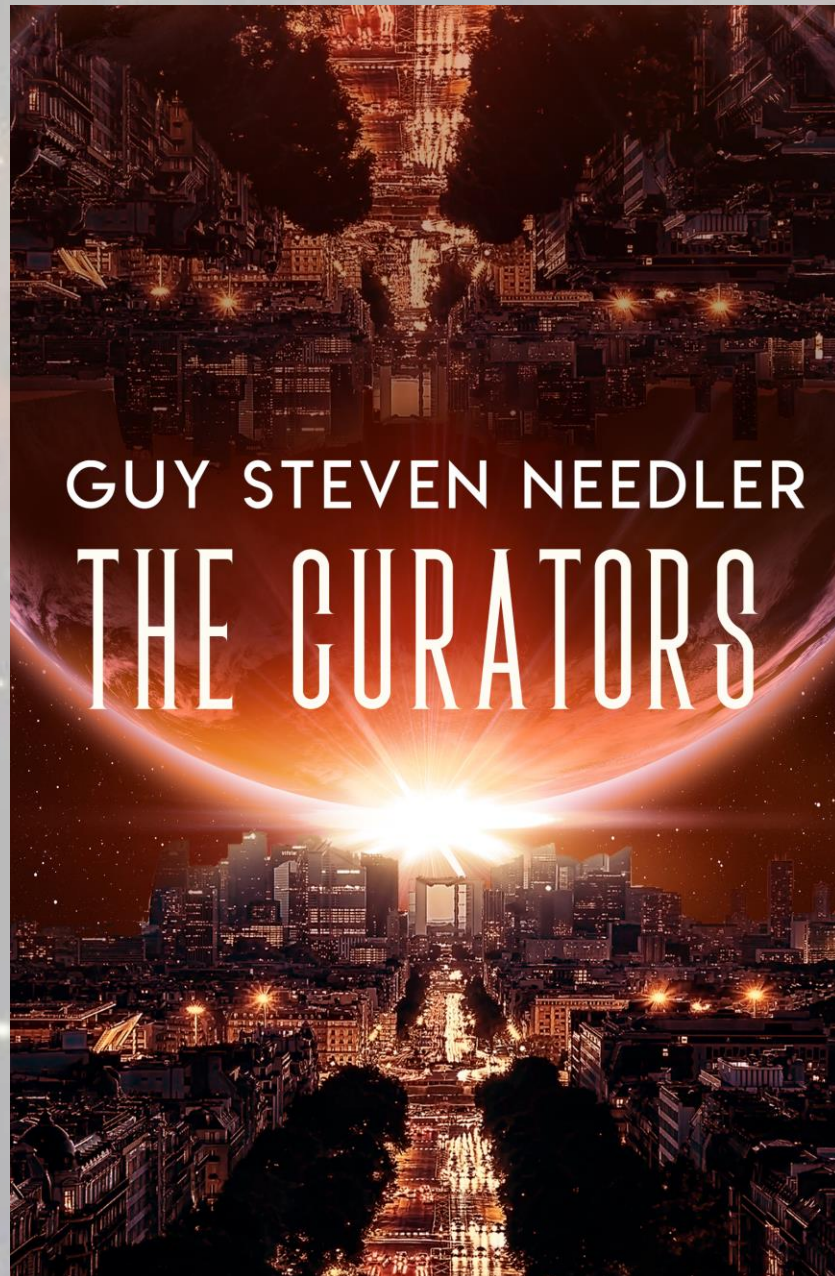
The Road to Sentience



And The Greater Reality



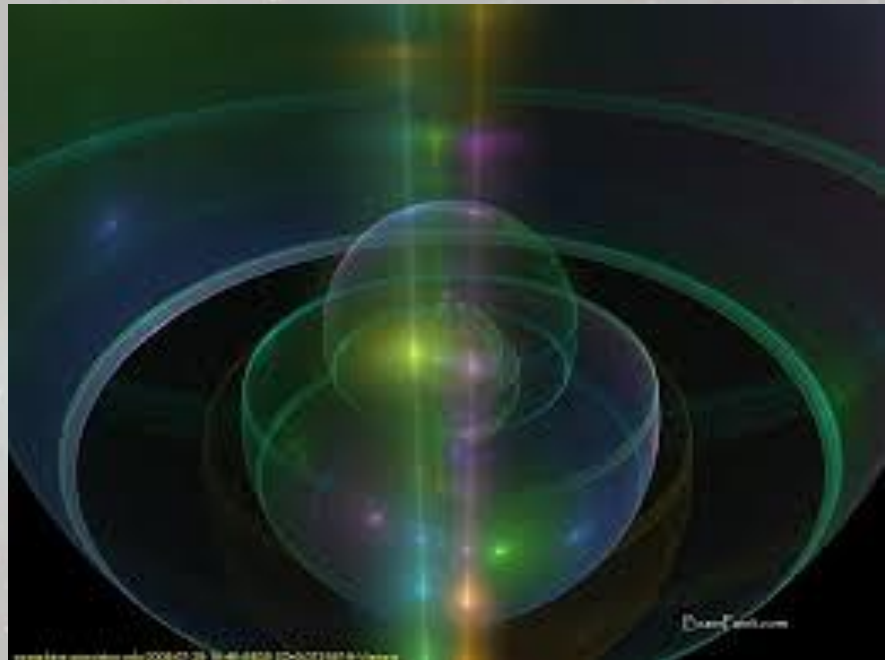
History of God Workshops and Traversing the Frequencies are a 'Beyond the Source' Production . Copyright© Guy Steven Needler 2012



This Presentation is a 'Beyond the Source' Production . Copyright© Guy Steven Needler 2012

Contents

- The Difference Between an Entity
- The 20 Steps of Sentience For an Energy To Become a Being
- Our Multiversal Environment
- Time Doesn't Exist – We exist in Events in Event Space
- The Versions of Event Space
- The Versions of Reality



What is an Entity?



What is a Being?



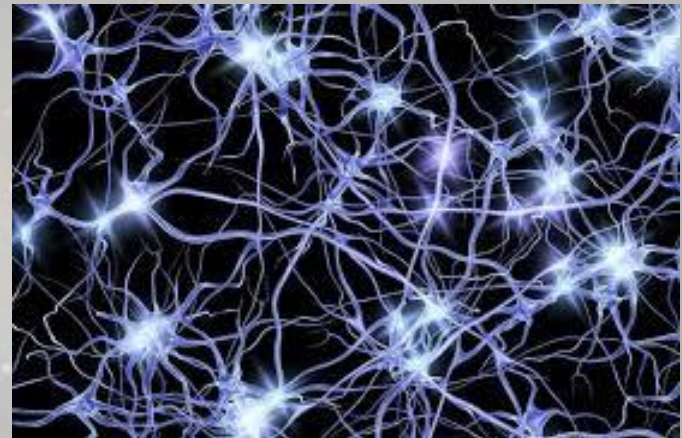
Entity vs a Being

- Entity – An individualised unit of sentience given a body of energy/ies by the division of sentience away from a higher entity, by that higher entity.
- Being – An individualised unit of sentience that has developed independently by the function of similar, same or sympathetic energy/ies collecting together and evolving over a period.





The 20 Steps on the Road to Sentience



The Road to Sentience

- 1. Attraction to same or sympathetic energy.**
- 2. Creation of limited intelligence—preferential
attractivity.**



- 3. Limited recognition of self and other energies.**
- 4. Creation of a more integrated intelligence.**



The Road to Sentience

5. **Sacrifice of individuality to create a larger intelligence—bigger self and Self-Awareness.**
6. **Creation of the collective “conscious” intelligence—the ability to “think” beyond the self within the self.**
7. **Creation of the single “conscious” intelligence from the collective.**
8. **Active desire to increase energetic “volume” and intelligence quotient.**



The Road to Sentience

9. Generation of the desire to create.

10. Recognition of the reason for the desire to create



11. Creation with no focus or direction.

12. Creation with a focus or directed outcome.



The Road to Sentience

- 13. Analysis of the creation, its directed outcome, and its actual outcome.**
- 14. Modification of creativity to increase the accuracy of actual versus desired outcome.**



- 15. Accrual of evolutionary content.**
- 16. Recognition of the accrual of evolutionary content.**



The Road to Sentience

17. The generation of sentience.

18. The recognition of sentience as a separate function within the original energy/ies.

19. The ability to disassociate the sentience from the original energy/ies.

20. The commandeering of a new energy.



Our Multiversal



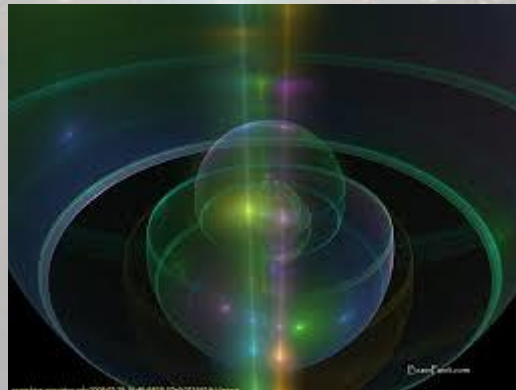
Environment



Our Multiverse

A Function of the Structure of our Creator

- There are 12 dimensions in the Multiverse
- There are 408 frequencies and 397 Universes within the 12 dimensions:
 - The Majority = 11 dimensions x 3 sub dimensions x 12 frequencies = 396 frequencies/universes
 - The Physical Universe = 1 dimension x 1 composite sub-dimension (3 into 1) x 12 frequencies = 1 Universe
 - Due to lowest frequencies not being able to create a universal environment in their own right



Time?

It Doesn't Exist?

We Exist in Event Space!

BUT!

What Exactly is Event Space?



What is Event Space

A rubber band ball is a good illustration of
“Event Space”



The Types of Event Space



Event Space - Definitions



Event Space –

- Is an area or volume of space within The Origin and therefore The Source Entity that exists as a parallel function of that space.



Event Space - Definitions

- **Demarcation between Event Spaces**
 - Is the line of non-interaction drawn between one Event Space and another.
- **Start of Event**
 - Event Space can allow any changes to have its own “start of event”, even when there appears to be no real start.



Event Space - Definitions

- **End of Event**

- Event Space can allow any changes to have its own “end of event”, even when there appears to be no real end.



- **Event Stream**

- The expected direction of a series of natural events within an Event Space.



- **Event Space Horizon**

- Event Spaces appear to be a white horizon on a white background



Event Space - Definitions

- **Event Stream Bubble**

- Where each event is a bubble of interaction between an entity or being and the environment it is working within.



- **Micro Event Space**

- A microscopically small Event Space that is specific to the needs of an individual entity, being or environment.



Event Space



- **A Parallel Condition**

- Is the duplication of Event Space.
- It is the creation or generation of a new but similar Event Space when a choice can be made.





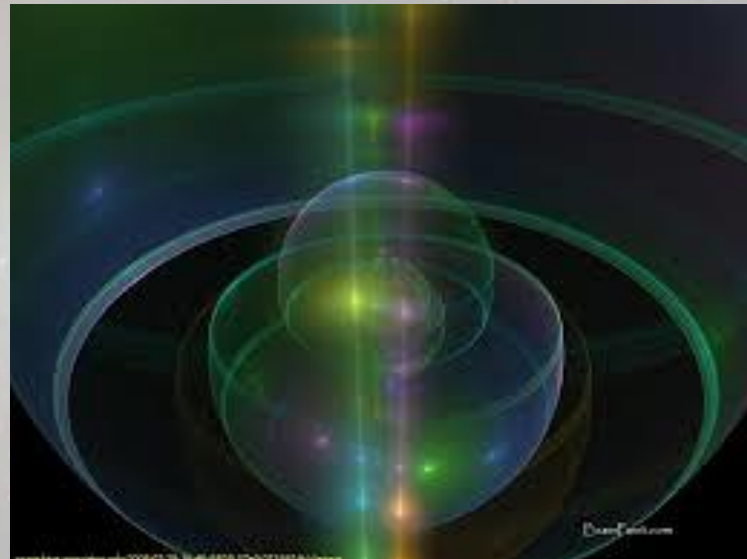
What is a reality and What are the Types of Reality



What is a Reality?

Reality

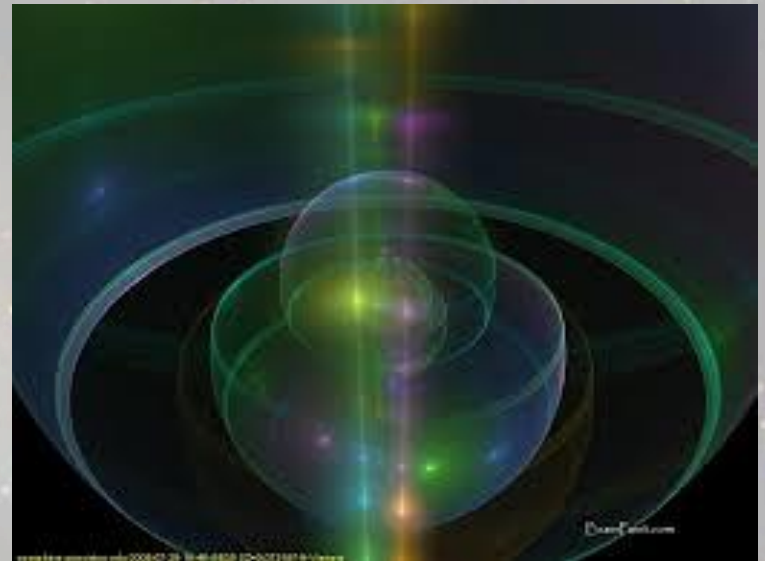
- An environment and interactive condition we create as a desired function of an Event Space or Event Stream.
- It is an entity or being generated perception based condition.



What is a Reality?

Alternative Reality

- A personal or group based perception.



The Types of Reality?

- **The Overall Reality**

- Is the experiential condition that is created by the existence of the sentence that is The Origin.



- **The Multiversal Reality**

- Is the experiential condition that is created by the governing entities responsible for a specific multiversal environment within a specific Source Entity.



The Types of Reality?

- **The Universal Reality**
 - Is a smaller representation of the multiversal reality.



- **The Global Reality**
 - Is a further dissection of the overall theme of reality.



The Types of Reality?

- **The Local Reality**

- Is the official start of convolution within realities.



- **The Locally Individualised Reality**

- Is relative to small groups of entities within a local reality, such as those living within a certain country.



- **The Individualised Reality**

- Is what entities or beings with individualised free will choose to create around them





Thank You

Questions
And
Answers

